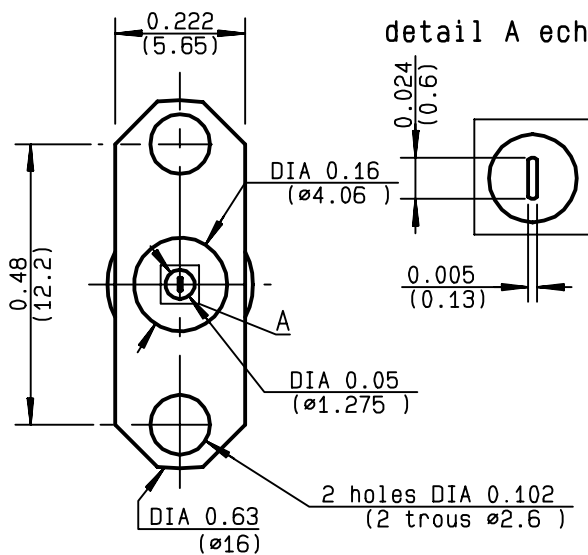


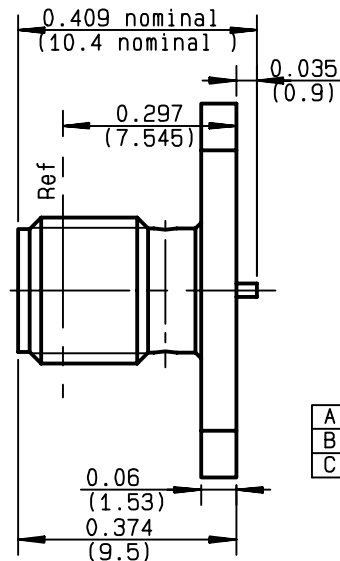
2 HOLES FLANGE JACK RECEPTACLE WITH TAB CONTACT

R125.625.030

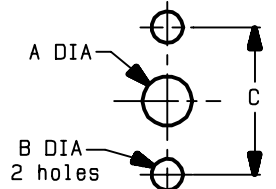
SERIES SMA



detail A ech: 3/1



PERCEPAGE PANNEAU
MOUNTING HOLE



	MM		INCH	
	maxi	mini	maxi	mini
A	4.2	4.1	0.165	0.161
B	2.65	2.6	0.104	0.102
C	12.25	12.15	0.482	0.478

NOMINAL IMPEDANCE	50	Ω
FREQUENCY RANGE	0-18	GHz
TEMPERATURE RATING	-65/+165	$^{\circ}\text{C}$
V.S.W.R	1.065 + .0025 x F(GHz)Maxi	
RF INSERTION LOSS	0.07 \sqrt{F} (GHz) dB Maxi	
VOLTAGE RATING	500	Veff Maxi
DIELECTRIC WITHSTANDING VOLTAGE	1000	Veff Mini
INSULATION RESISTANCE	5000	M Ω Mini
HERMETIC SEAL	NA	Atm.cm ³ /s
LEAKAGE (pressurized only)	NA	
MECHANICAL DURABILITY	500	Cycles
WEIGHT	1.6	gr
SPECIFICATION		

CABLES :

OTHERS CHARACTERISTICS

CABLE RETENTION	NA	N Mini
CENTER CONTACT RETENTION		
Axial force - mating end	27	N Mini
Axial force - opposite end	27	N Mini
Torque	2.8	cm.N Mini
RECOMMENDED TORQUES		
Mating	NA	cm.N
Panel nut	NA	cm.N
Clamp nut	NA	cm.N

CONNECTOR PARTS. MATERIALS

BODY	STAINLESS STEEL
OUTER CONTACT	
CENTER CONTACT	BERYLLIUM COPPER
INSULATOR	PTFE
GASKET	
OTHERS PIECES	

FINISH

(all values are given)
in micrometers

PASSIVATED .

GOLD 1.3 OVER NICKEL 2

-

-

ISSUE

9840A00

CREATION DATE

28/05/1996

FILE PART-NUMBER

96-0014-002



RADIALL®

The information given here is subject to change without notice.
Design changes may be in order to improve the product .

Connect to the future